



Soundmagus Car Amplifier Specification

1 Model number: X1502



2 Features:

- 1500W rms Class-D amplifier.
- 1 ohm load stable.
- Double Side PCB and SMD components.
- Adjustable Input level, LPF, Subsonic, bass boost function.
- Advanced short circuit, overload, over heat and low voltage protection.
- Easy bridgeable with same amplifier.
- Heavy duty terminals.
- Optional remote controller.

3 Detailed specs:

3.1 Test Condition.

All the specs were tested with following condition unless noted.

1. Power supply: 14.4V DC power supply
2. Test signal: 50Hz sine wave.



3. Loads: Resistor dummy load.
4. Environment: 25 degree C, open air.
5. Relative humidity: 70%.
6. Test Instruments: Audio Precision SYS-2322A.

3.2 Output power performance

Following table is the RMS output power with THD+N(A-weighted, <22KHz) value at 5%, 3%, 2% and 1%.

Power THD+N	RMS power (1ohm)	RMS power (2ohm)	RMS power(4ohm)
5%	1612W	1203W	791W
3%	1493W	1115W	689W
2%	1381W	1032W	628W
1%	1290W	928W	579W

Table 1 Output Power with THD+N

Following chat shows the output power with THD+N curve at 4ohm loads, 2ohm loads and 1ohm loads.

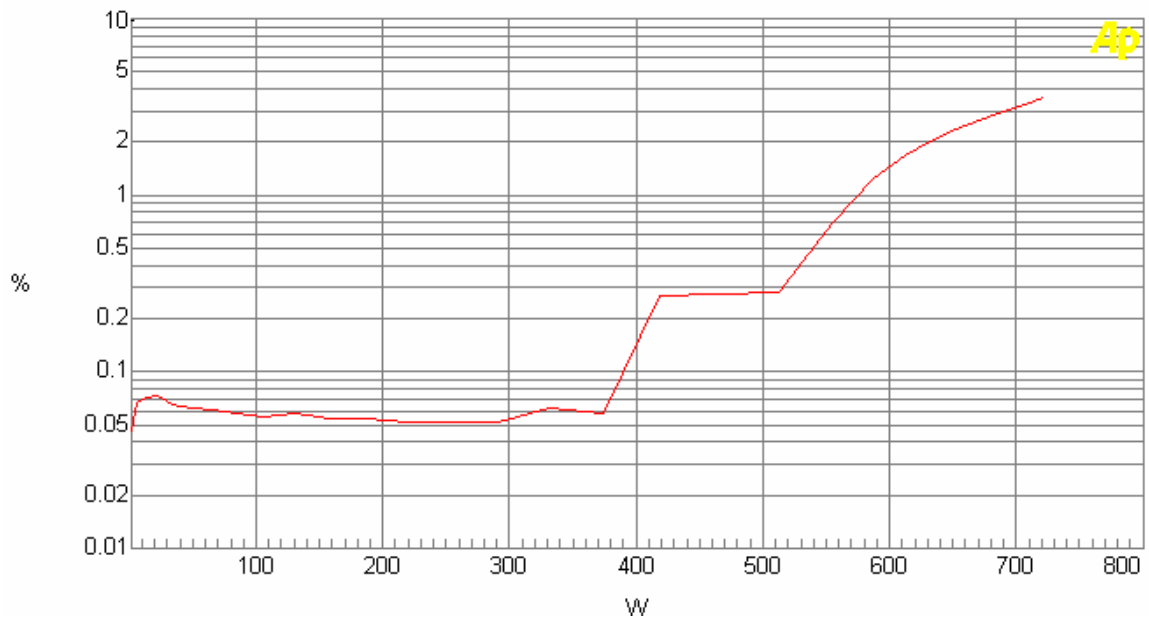


Chart 1. RMS output power @4ohm with THD+N

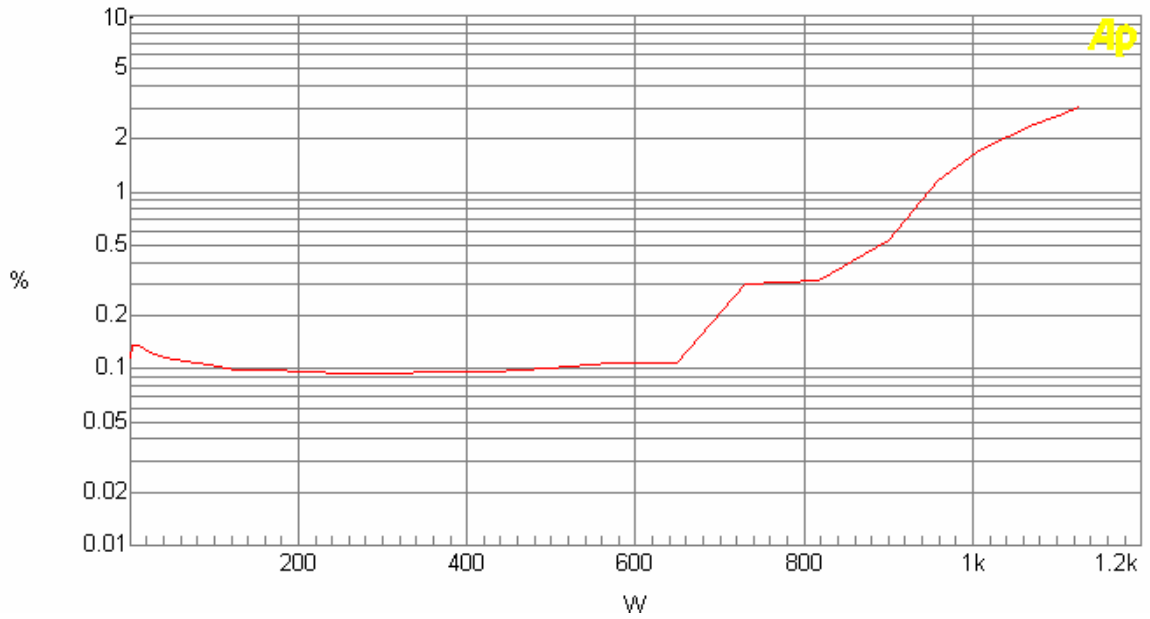


Chart 2. RMS output power @2ohm with THD+N

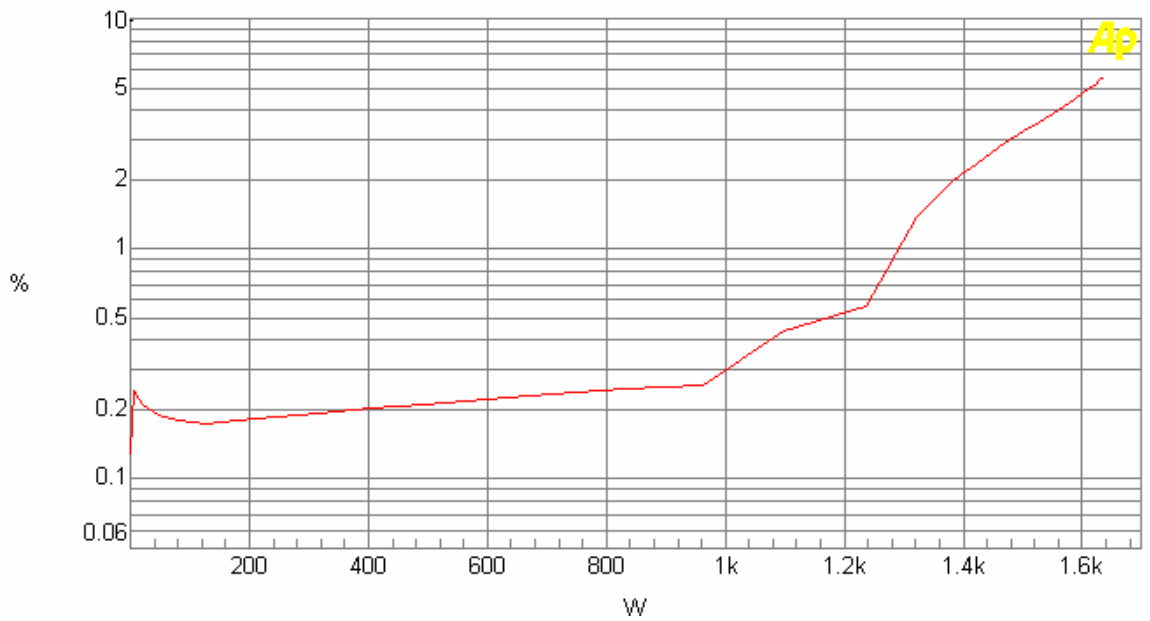


Chart 3. RMS power @1ohm with THD+N

3.3 Frequency Response

1. -3dB frequency response: 8Hz~178Hz.
2. -1dB frequency response: 11Hz~135Hz.

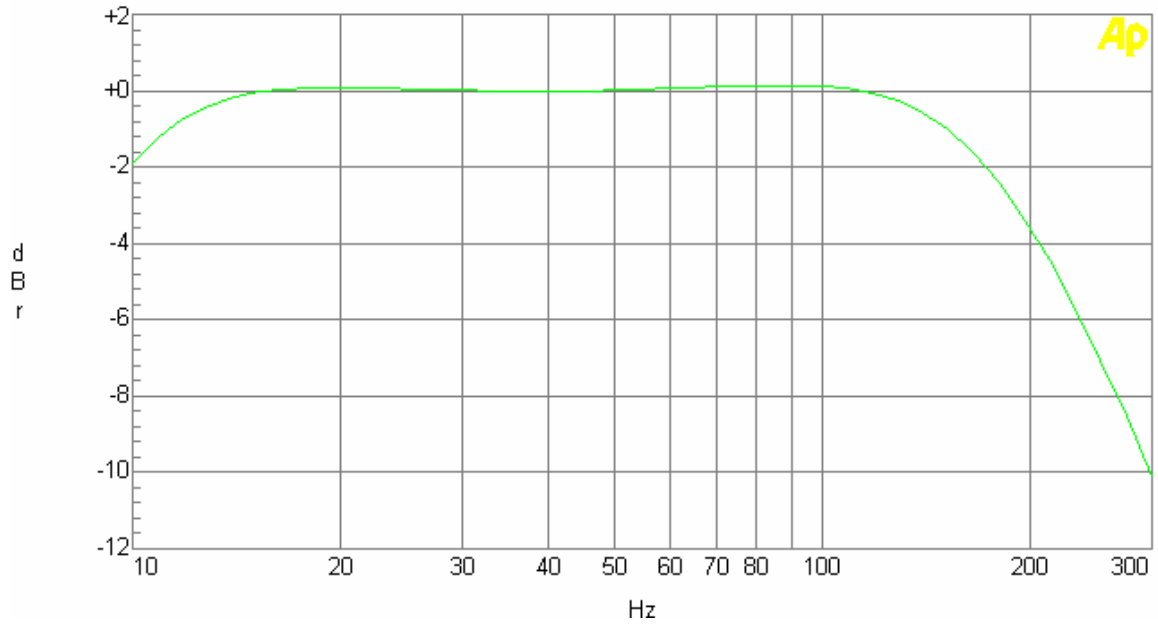


Chart 4. Frequency Response

3.4 LPF & Subsonic Filter features

1. LPF adjustable from 45Hz~178Hz.
2. Subsonic Filter adjustable from 8Hz~32Hz.

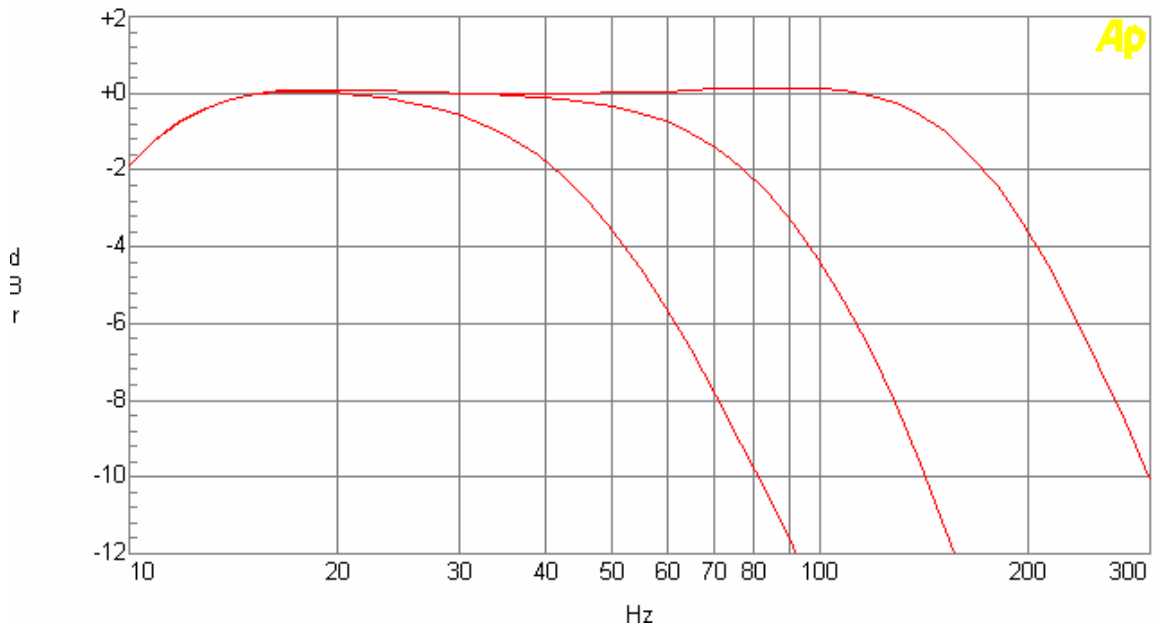


Chart 5. LPF response

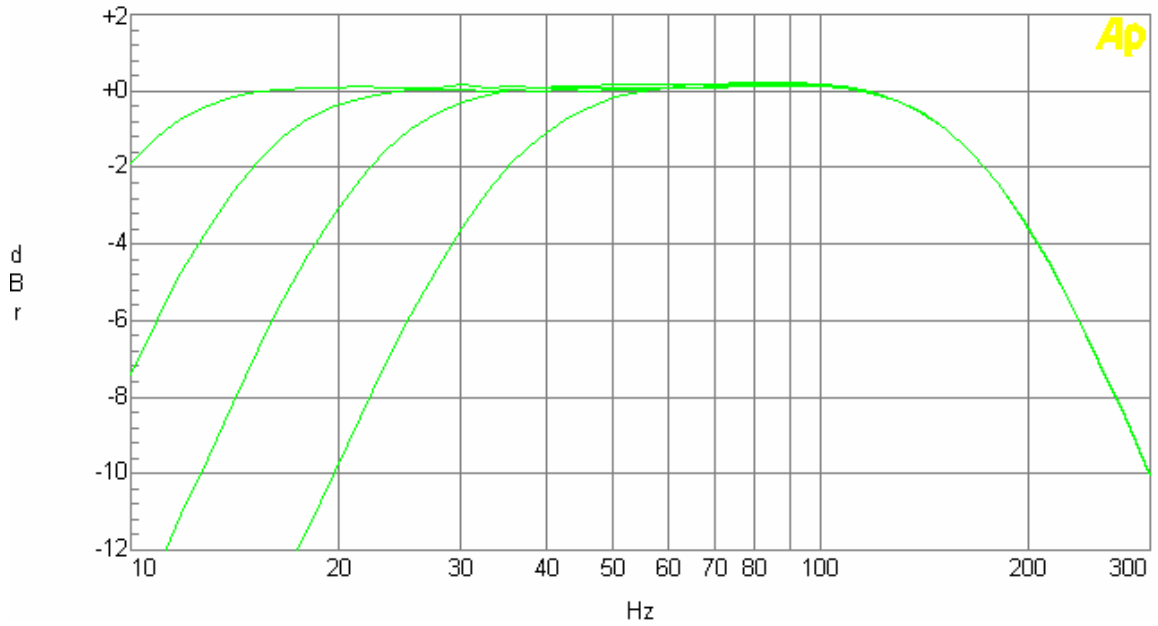


Chart 6. Subsonic Filter response

3.5 Bass Boost Feature

Bass boost center frequency adjustable from 30Hz~80Hz, level adjustable from 0~12dB.

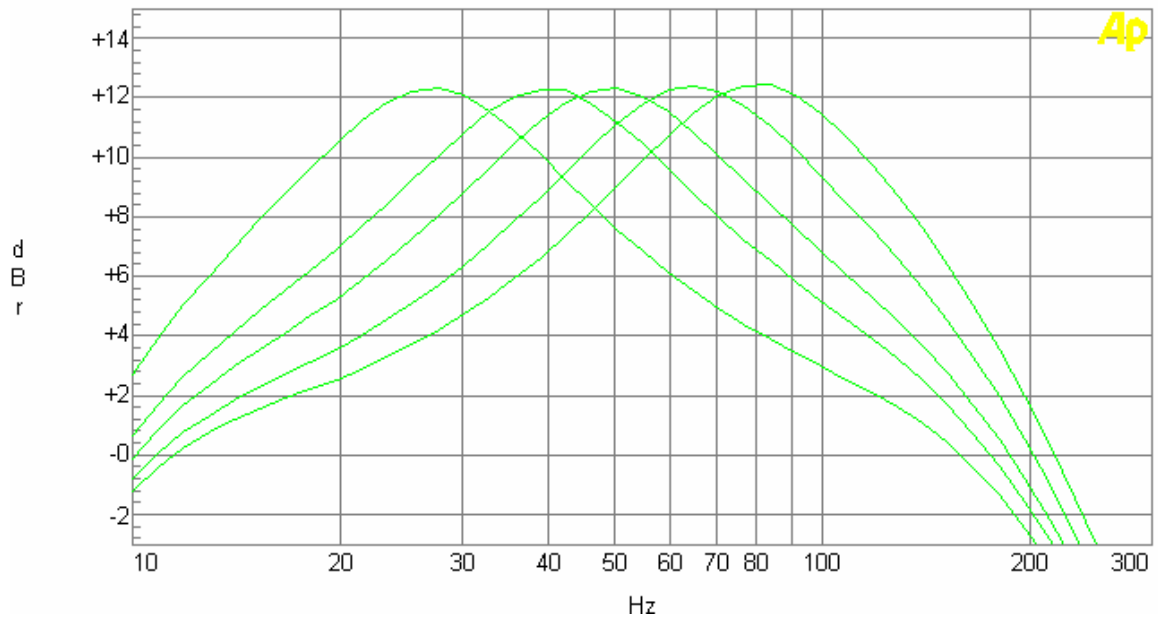


Chart 7. Bass boost frequency adjust

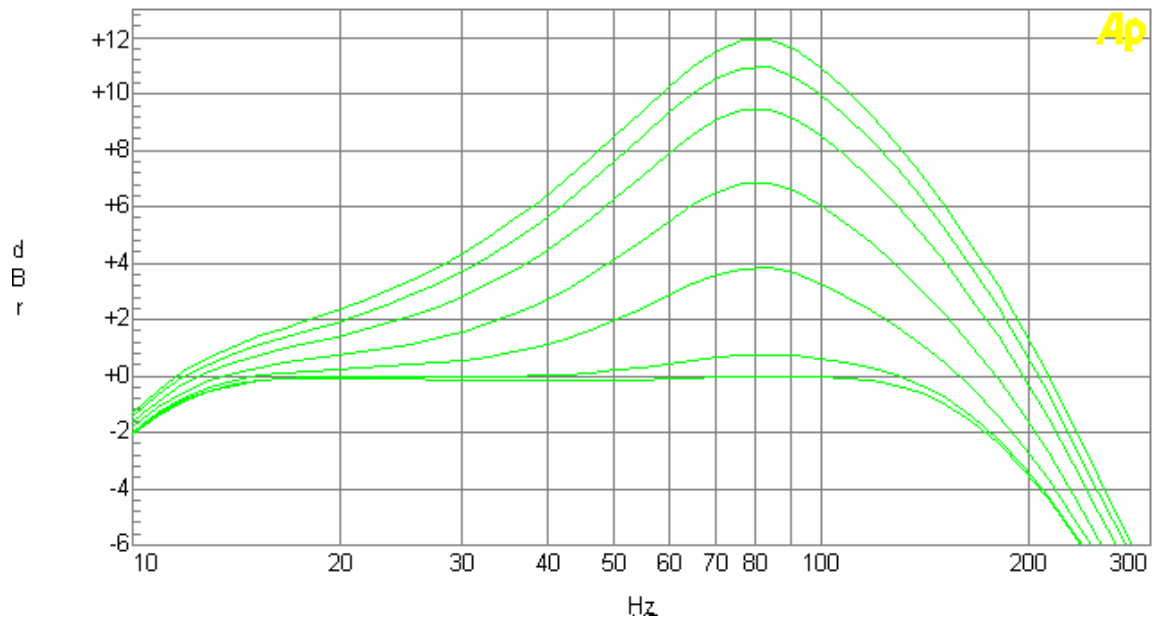


Chart 8. Bass boost level adjust (center set at 80Hz)

3.6 THD+N

THD+N=0.061% @ 380W output power with 4ohm load.

3.7 Protection System

1. Overload:

Protect less than 0.7Ohm loads at full scale output power.

2. Short Circuit:

Full rated power short circuit protect test: passed.

Full rated power long last short circuit test: 10 minutes passed.

3. Over temperature:

Protect while inner temperature over 80 degree C.

4. Low voltage:

Protect while power supply voltage lower than 7.8V.

3.8 Idle current and Efficiency:

1. Idle current: 1.31A
2. Efficiency: 83% at 960W (2ohm)



SOUNDMAGUS TECHNOLOGY CO.,LTD.
4 Floor, E Building Huafeng Fusen Industrial Park, Hangcheng Road
Gushu, Baoan District, Shenzhen China
TEL: 0086-755-61526199 0086-755-61526182 FAX:0086-755-61526166

3.9 Bridge method

X1502 can be bridged with same amplifier through single RCA cable, no addition switch needed. All the adjustable functions on slave amplifier will follow master once be bridged.

3.10 Dimension

This amplifier's size is at 228mmX376mmX53mm(W,L,H).